

Untitled Map

Combined acreage of the Cornet-Windy Ridge, Canyon Creek Complex, Grizzly and Rail fires of 2015 & 2016.

What it would look like to the typical Eastern Oregonian?

The fires combined acreage would have covered the entire Baker & Grande Ronde Valley's.

From Baker to North Powder, up to La Grande, up to Summerville, over to Imbler, along the foot of Mt. Harris, down to Cove and covering High Valley. Down to Union, over Frazier Rock and back to North Powder. along the Powder River to Thief Valley to the Medical Springs Highway and back to the Baker Valey and Baker itself.

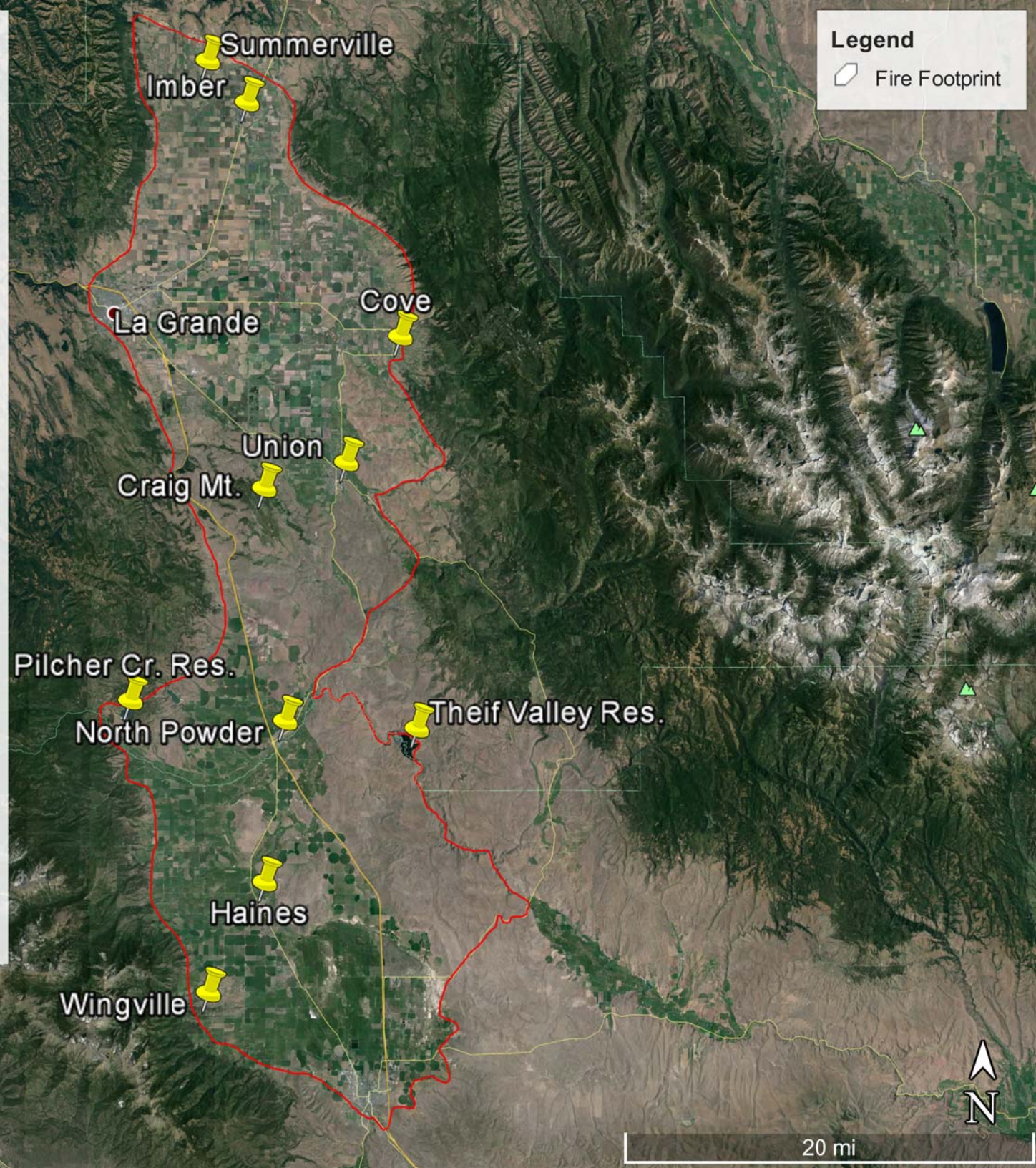
336,000 ac's burned, Homes, Livestock, Wildlife, Millions of Board feet of timber gone.

Does anyone believe less roads infrastructure makes use "safer?"

Does anyone believe we are a position to destroy roads that give our fire fighters safer access to forest fires?

The Blue Mountains Forest Plan Revision will be coming back out in the next couple of months, you will have a right to object if it does not meet your desired needs.

Will you be in line to write your objection when the time comes?



Legend
Fire Footprint

